

## Feeney DesignRail® with Laser-Cut Aluminum Panel Infill

### Flexible Frame Design

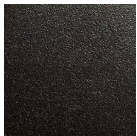
- AAMA 2604 Powder Coated Aluminum with Stainless Steel Fasteners
- 36" or 42" standard heights (also available in custom heights)
- 5' on center max. post spacing
- Compatible with 6 Standard Top Rail Profiles
- Available for Level or Stair applications



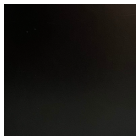
### Aluminum Panels

- 1/4" thick aluminum panels
- Durable powder-coated finish on both sides
- Multiple patterns available with the capability to do custom designs

### Frame/Panel Color Options



Textured Black

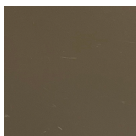


Matte Black

- Durable, powder coated finishes adhere to AAMA-2604 coating specifications for superior color retention, impact resistance, and weather protection.



Bright White



Bronze

- Frame and panel colors can be mixed and matched

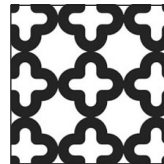
- Choose from the top selling colors listed here or go online to [feeneyinc.com/ColorEasy](http://feeneyinc.com/ColorEasy) to see more options.



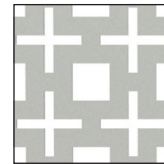
Silver



### 9 Laser-Cut Patterns or Design Your Own!



Agama™



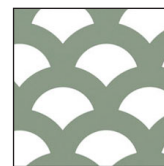
Bound™



Cubist®



Cypher™



Pisces™



Seagrass™



Sverra™

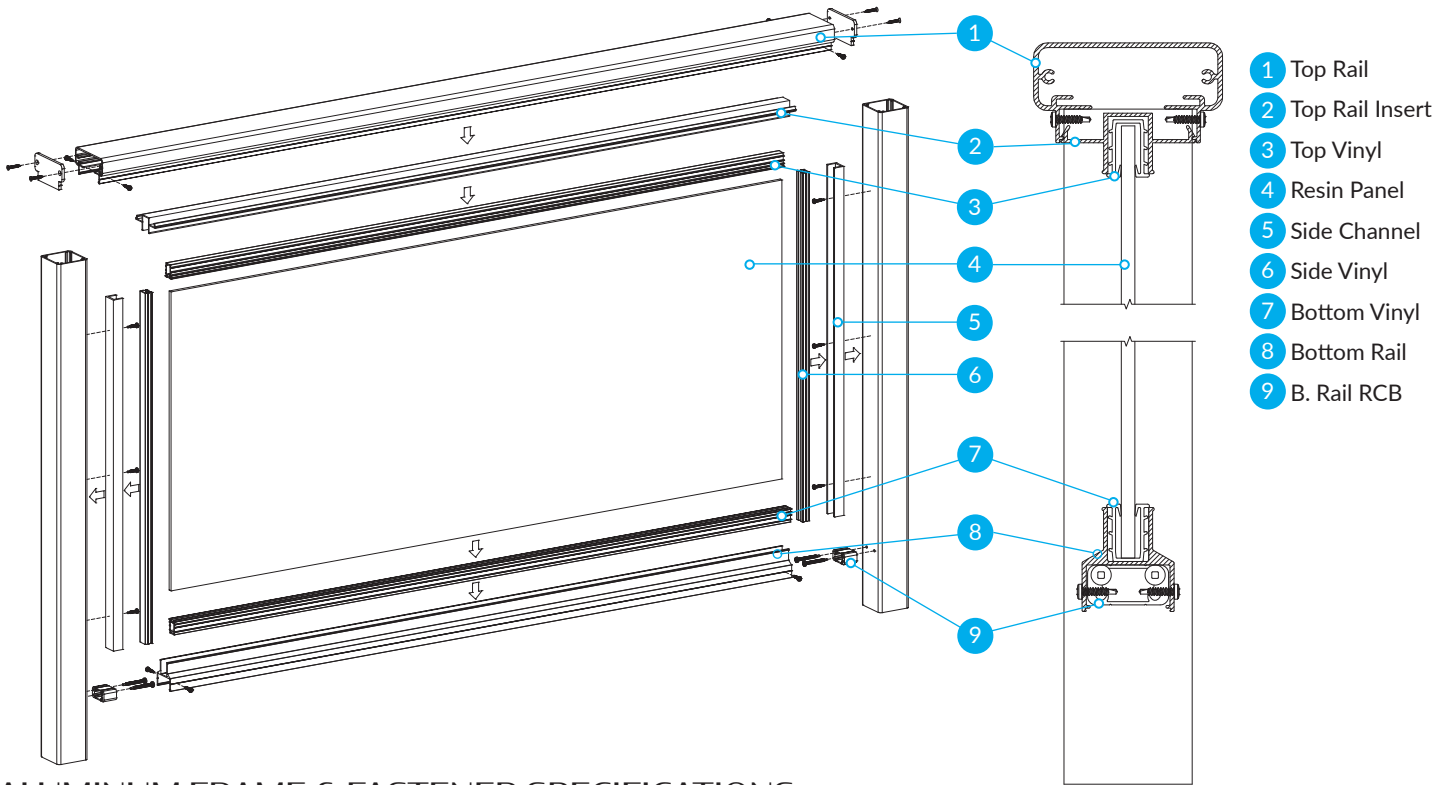


Torrent™



Trillium®

## ASSEMBLY DIAGRAMS



## ALUMINUM FRAME & FASTENER SPECIFICATIONS

Extrusion Type	Alloy	Specification
Posts, RCBs, Splice Tubes, Fascia Brackets	6005A-T5	ASTM B221
Top Rail, Bottom Rail, Intermediate Rail, Snap Cap, Inserts, Pickets	6063-T6	ASTM B221 AMSQQA200/9
Handrail Extrusion	6063-T52	ASTM B221 ASTM B429

Fastener	Alloy	Specification
Lag Screws	Type 18-8 Stainless Steel	ANSI/ASME B18.2.1-2012
Thru-Bolts/ Cap Screws	Type 18-8 Stainless Steel	ASTM F593017 CW
Assembly Screws	Type 410 Stainless Steel	ANSI/ASME B18.6.4

## LASER-CUT ALUMINUM PANEL SPECIFICATIONS

Material	Specification
Aluminum Panel	5052-T52
Powder-Coating	AAMA 2604

## MAINTENANCE GUIDELINES

Laser-Cut Aluminum panels should be cleaned periodically. Cleaning frequency will depend on the environmental conditions that the product is placed in. Feeney recommends warm water and mild soap.

Rinse the panels with fresh water. Remove dust and dirt with a soft cloth or sponge and a solution of mild soap and/or liquid detergent in water.

Always use a soft, damp cloth to blot dry. Avoid harsh solutions or abrasive cleaning compounds, included but not limited to: alkaline or acidic cleaners, solutions containing trisodium phosphate, phosphoric acid, hydrofluoric acid, gasoline, benzene, acetone, carbon tetrachloride, certain deicing fluids, lacquer thinner or other strong solvents.

Product should be cleaned when the metal is shaded.



### The Stairway Shop

5717 Salmen Street New Orleans, LA 70123  
sales@stairwayshop.com | 888-243-3339